

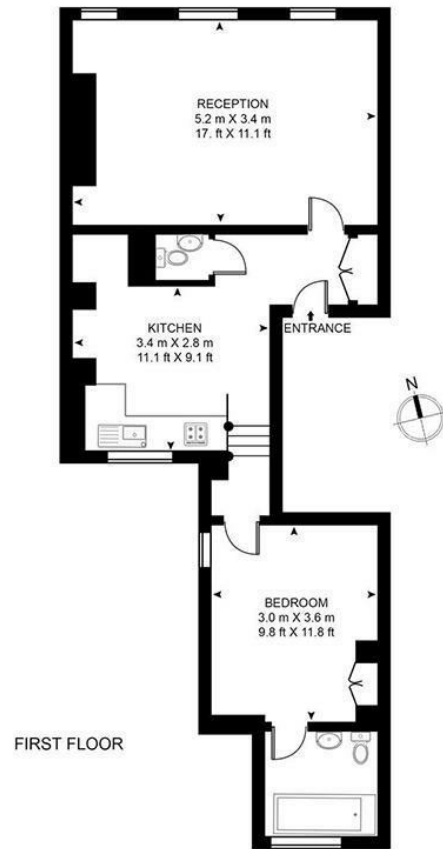


Lavender Hill, London, SW11 5QL  
£349,950

For Sale

Gray's  
RESIDENTIAL

APPROXIMATE GROSS INTERNAL FLOOR AREA 524 SQ.FT (48.7 SQ.M)



Gray's Residential is delighted to present this well-appointed first-floor flat in the heart of Clapham Junction. Tastefully finished and neutrally decorated throughout, the property features a generous reception room, modern fitted kitchen, spacious double bedroom, and a contemporary bathroom suite with an overhead shower. Attractive wooden flooring adds a warm, stylish touch throughout the space.

Conveniently located just a 10-minute walk from Clapham Junction Station (National Rail), this property offers excellent transport links, making it an ideal choice for commuters. Residents will enjoy easy access to an array of local amenities, including vibrant bars, cafés, restaurants, supermarkets, and boutique shops found along Lavender Hill, Northcote Road, and Battersea Rise. The wide open green spaces of Clapham Common are also nearby, offering a welcome retreat from city life.

The property is offered chain-free or with tenants in situ, making it a versatile opportunity for both first-time buyers and investment purchasers alike.